

DASHED LINES SHOW SNOW HOLD

SEA WATER INTAKE (TYPICAL FOR 2 PORT AND STARBOARD)

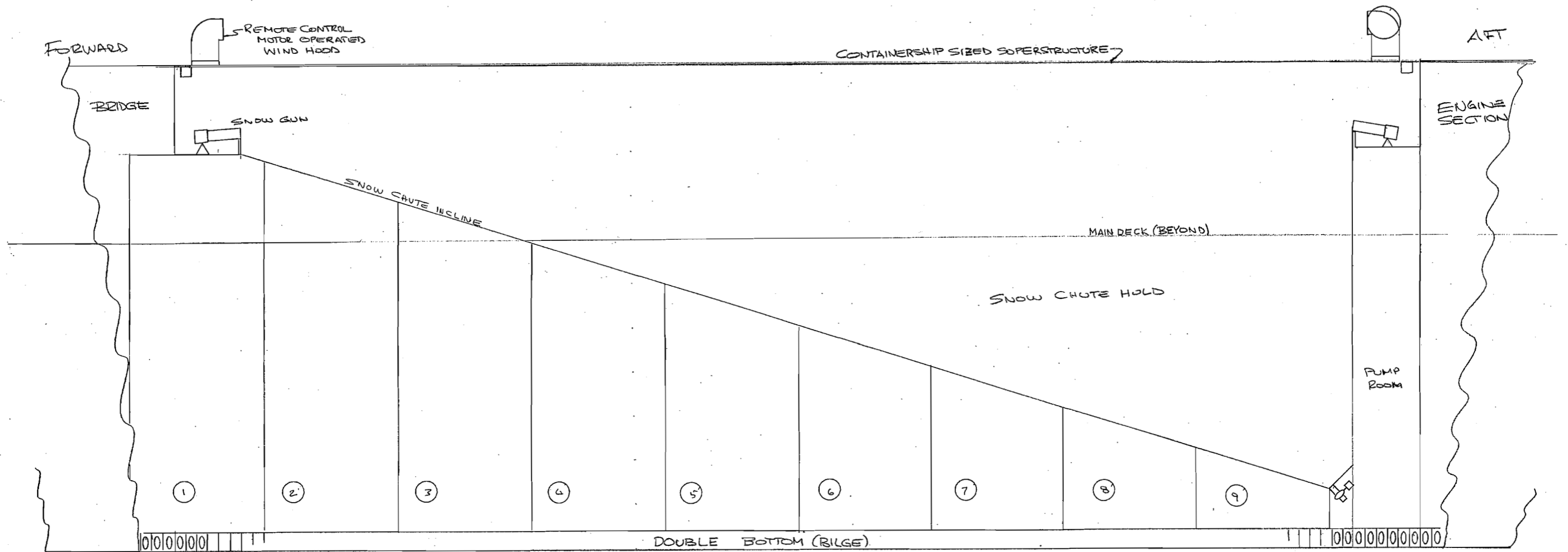
Revised 10/16/2006. Heinz G. Stripp, Inventor, US Patent # 6,076,364.

DRAFT

AQUIFER OCEAN LLC SNOW MAKER SHIP CONCEPT US PATENT # 6076364

AQUIFER OCEAN LLC
 DRINKING WATER FROM THE SEA
 US PATENT # 6076364
 CONCEPTUAL ARRANGEMENT - ALL STRUCTURAL DESIGN BY SHIP BUILDER
 NO SCALE

Heinz G. Stripp
 HEINZ G. STRIPP
 P.O. BOX 1317
 PHILADELPHIA, PA 19108-0317



① SNOWMELT STORAGE HOLD
 ## SIZE OF STORAGE HOLD BY SHIP BUILDER

NOTES: 1. SEE DRAWING # 2 FOR SECTIONS, # 3 FOR RISER.
 2. PUMP ROOM INCLUDES SNOW MAKING EQUIPMENT.
 3. STRUCTURAL DETAILS BY SHIP BUILDER
 4. SNOWGUN DETAILS BY AQUIFER OCEAN

PORT SIDE ELEVATION (NO SCALE)

Revised 10/16/2006. Heinz G. Stripp, Inventor, US Patent # 6,076,364.

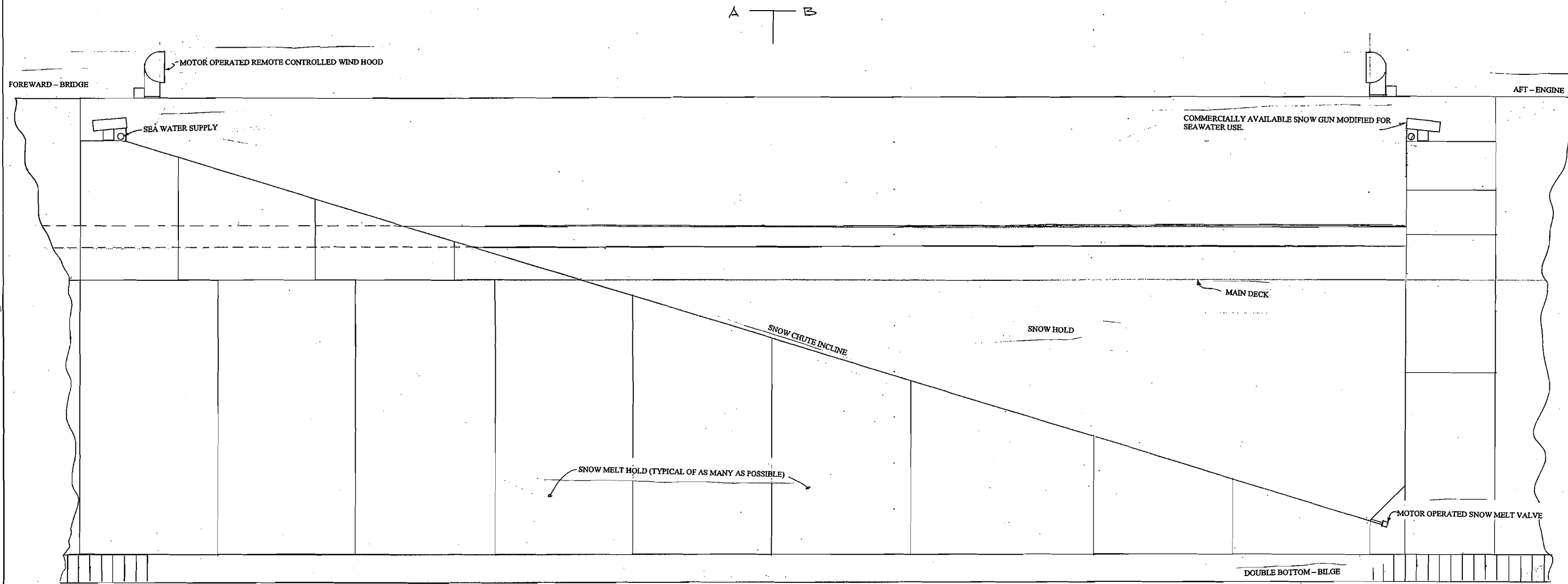
DRAFT

HEINZ G. STRIPP
 P.O. BOX 5817
 PHILADELPHIA, PA 19130-4217

AQUIFER OCEAN LLC
 DRINKING WATER FROM THE SEA.
 US PATENT # 6076364

Heinz G. Stripp
 Heinz G. Stripp

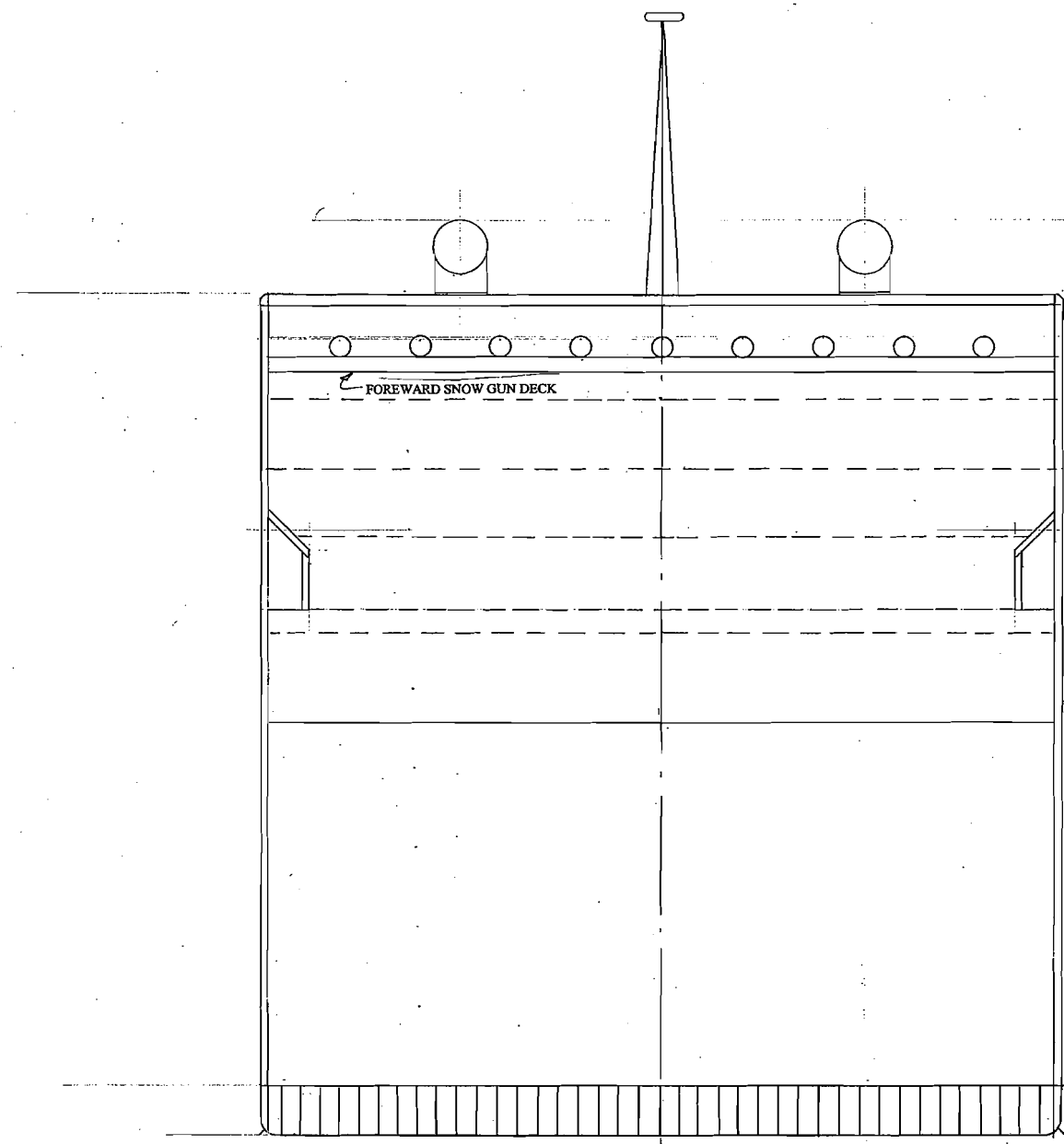
DRAWING
 ± 1
 8/10/05



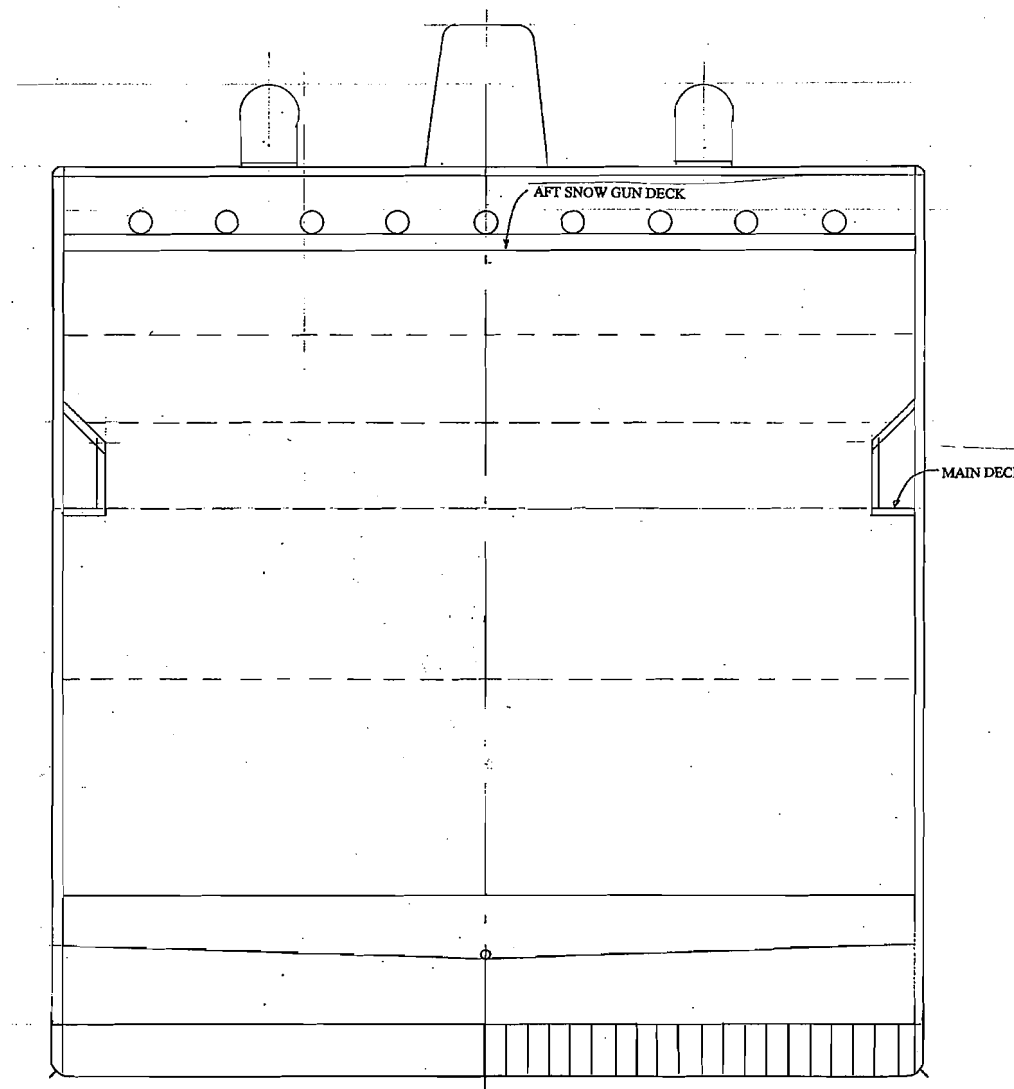
PORT SIDE ELEVATION OF SNOW MAKER COMPARTMENT - HULL NOT SHOWN

Revised 10/16/2006. Heinz G. Stripp, Inventor, US Patent # 6,076,364.

DRAFT



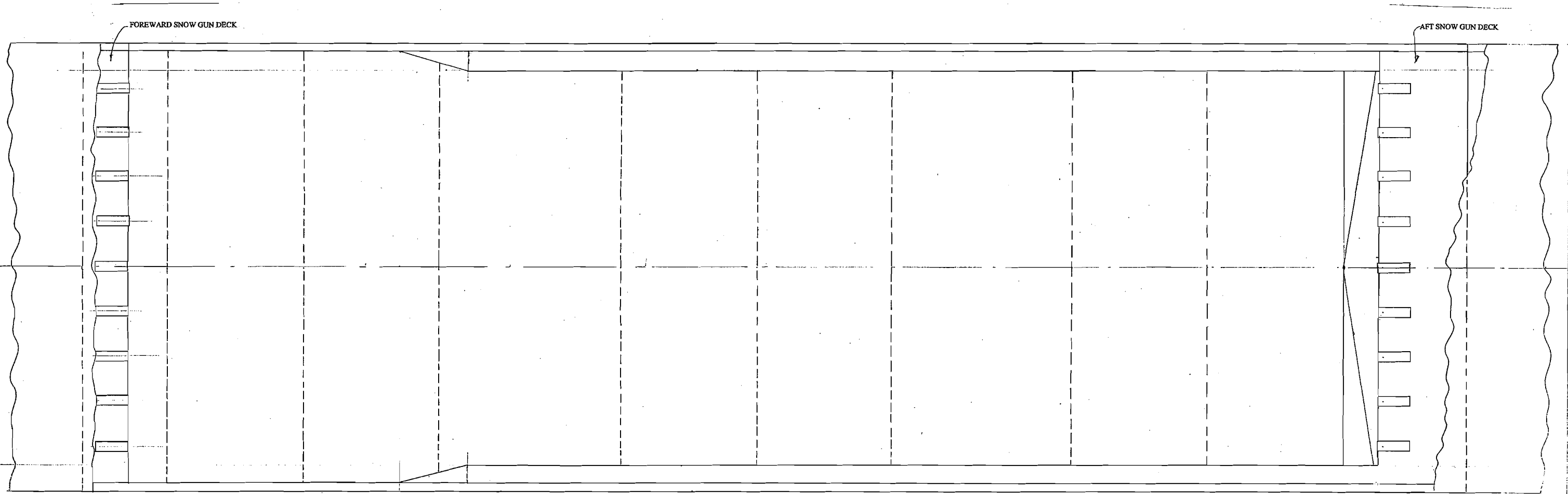
SECTION -A- LOOKING FORWARD TOWARDS BRIDGE



SECTION -B- LOOKING AFT TOWARDS ENGINE

Revised 10/16/2006. Heinz G. Stripp, Inventor, US Patent # 6,076,364.

DRAFT



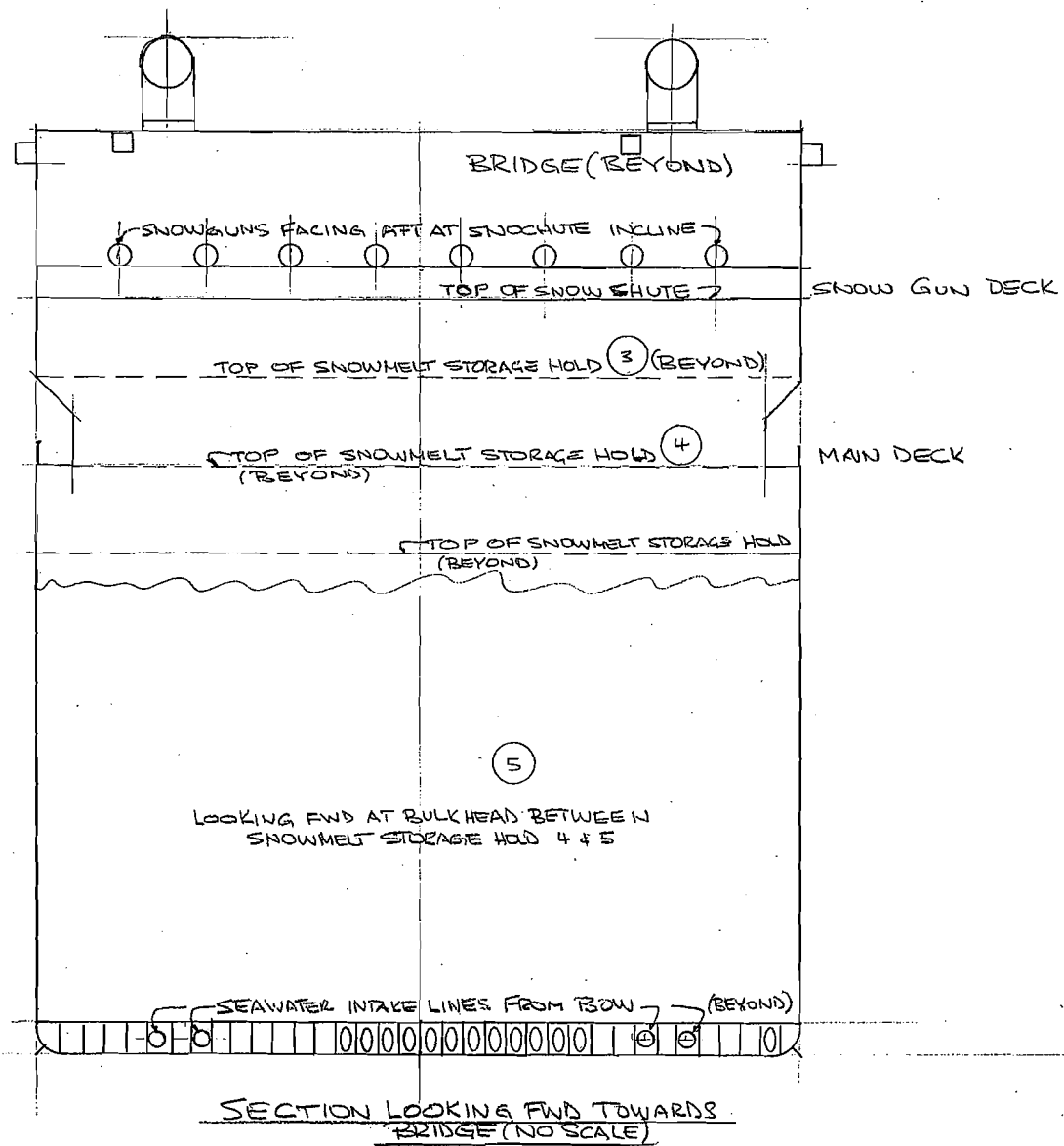
PLAN OF SNOW MAKER COMPARTMENT - TOP DECK NOT SHOWN

Revised 10/16/2006. Heinz G. Stripp, Inventor, US Patent # 6,076,364.

DRAFT

AQUIFER OCEAN LLC
 DRINKING WATER FROM THE SEA.
 US PATENT # 6076364.
 CONCEPTUAL ARRANGEMENT - ALL STRUCTURAL DESIGN BY SHIP BUILDER
 NO SCALE

Heinz G. Stripp
 HEINZ G. STRIPP
 P.O. BOX 3327
 PHILADELPHIA, PA 19109-0327



Revised 10/16/2006. Heinz G. Stripp, Inventor, US Patent # 6,076,364.

DRAFT

HEINZ G. STRIPP
 P.O. BOX 3317
 PHILADELPHIA, PA 19130-4317

Revised 10/16/2006. Heinz G. Stripp, Inventor, US Patent # 6,076,364.

Heinz G. Stripp, Aquifer Ocean LLC.
PO Box 3217
Philadelphia PA 19130-0217

Saturday, July 03, 2004

SNOW GUN NOTES:

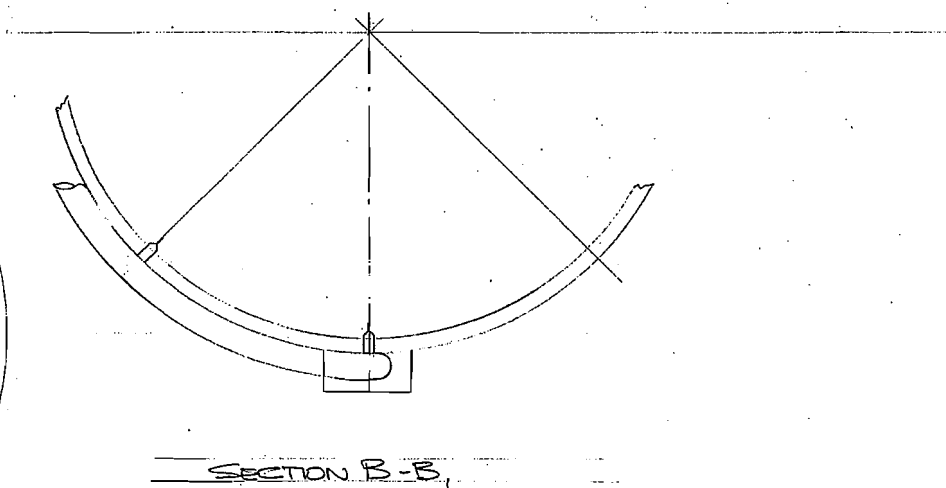
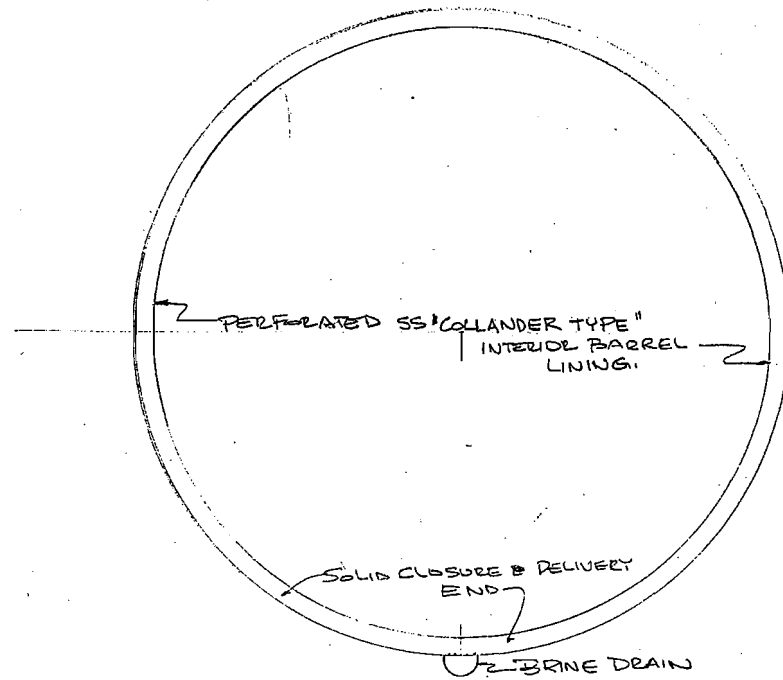
1. THE DIFFERENCE BETWEEN CONVENTIONAL SNOW GUNS OF THE BARREL TYPE AND THE SEAWATER SNOW GUN IS THE PRESENCE OF A DRAINAGE SYSTEM FOR UNFROZEN BRINE AND THE WAY THE UNFROZEN BRINE IS COLLECTED AND SEPARATED FROM THE BARREL INTERIOR WHILE SNOW IS MADE.

2. THE STAINLESS STEEL SEAWATER SNOW GUN DESIGN IS SUCH THAT ONLY A MINUTE AMOUNT OF THE UNFROZEN BRINE COMPONENT OF THE SEAWATER IN THE SNOW GUN BARREL GOES OUT THE SNOWMAKING END OF THE SNOW GUN WITH THE SNOW. MOST OF THE UNFROZEN BRINE DOES NOT ESCAPE THE SNOW GUN BARREL AT THE SNOWMAKING END BUT GRAVITY FLOWS BACK TO THE BILGE VIA BRINE DRAIN PLUMBING. THE BRINE CAN BE STORED OR PUMPED OVER BOARD OR BOTH.

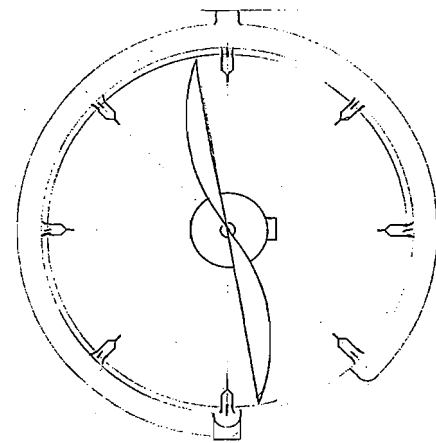
3. THE BARREL HAS A PERFORATED SS COLLANDER TYPE INTERIOR BARREL LINING. THE FIRST SEA WATER INJECTION NOZZLE TO THE VERY END OF THE BARREL WHERE SNOW ESCAPES.

4. EXPERIENCE SHOWS, SNOW MAKERS KNOW, THAT ANY BRINE OR OTHER UNFROZEN LIQUID CONCENTRATE DROPS OUT OF THE SNOW WITHIN A FEW FEET OF THE INJECTION NOZZLE OR SNOW GUN SPOUT IN THE CASE OF A SNOW GUN OTHER THAN THE BARREL TYPE. THAT IS TRUE NO MATTER WHAT WATER PRESSURE OR PROPELLER SPEED OR BOTH IS USED.

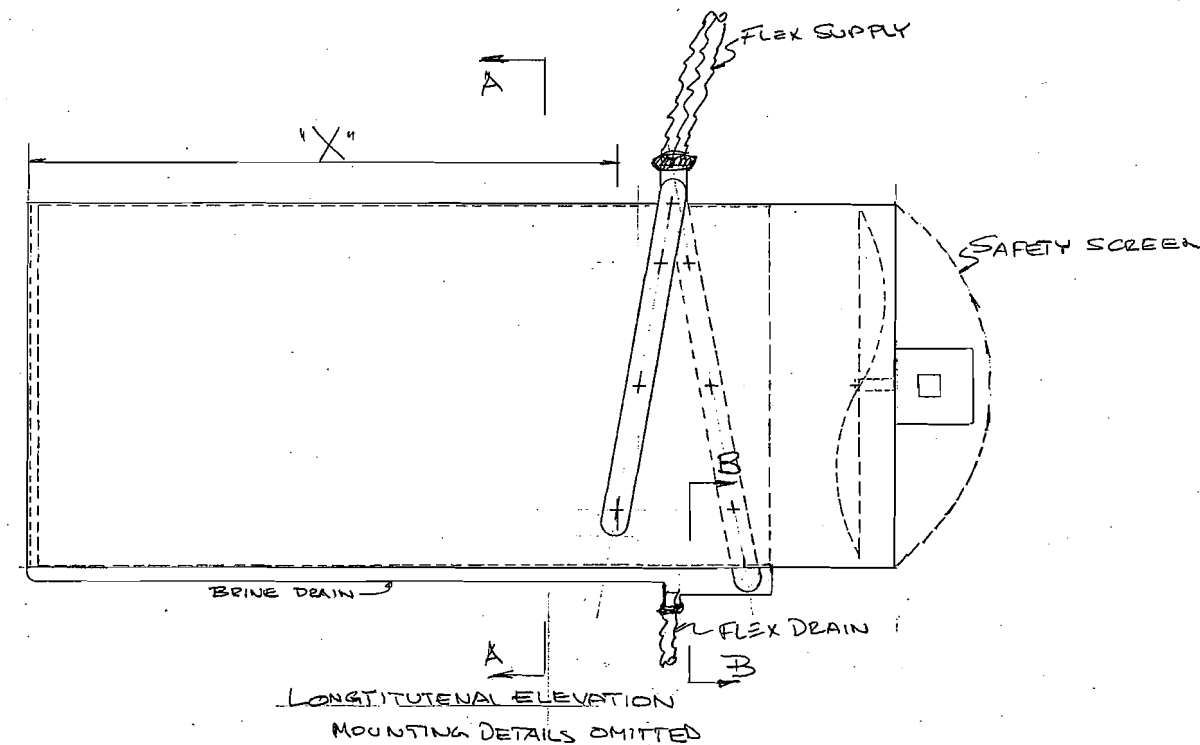
5. CONVENTIONAL BARREL TYPE SNOW GUNS HAVE SHORT BARRELS TO AVOID THE ACCUMULATION OF ANY UNFROZEN LIQUID IN THE BARREL. THE AQUIFER OCEAN SNOW GUN HAS A LONG BARREL TO PREVENT ANY OR AT LEAST MOST CONCENTRATED BRINE FROM LEAVING THE SNOW MAKING END OF THE BARREL. "X" = 3 METER IF THE BARREL IS 1 METER IN DIAMETER AND IS THE MINIMUM SIZE AQUIFER OCEAN SNOW GUN. THIS PROPORTIONAL RELATIONSHIP OF LENGTH TO DIAMETER SHOULD PREVAIL AS A MINIMUM FOR ANY SIZE SHIP. - UNTIL EXPERIENCE TEACHES DIFFERENT.



SECTION A-A
LOOKING TOWARDS FRONT OF
BARREL



FRONT VIEW



LONGITUDINAL ELEVATION
MOUNTING DETAILS OMITTED

REAR VIEW
OMITTED

DRAFT